



# Projected Costs

## \$1.3 Million ~ Campaign Goal

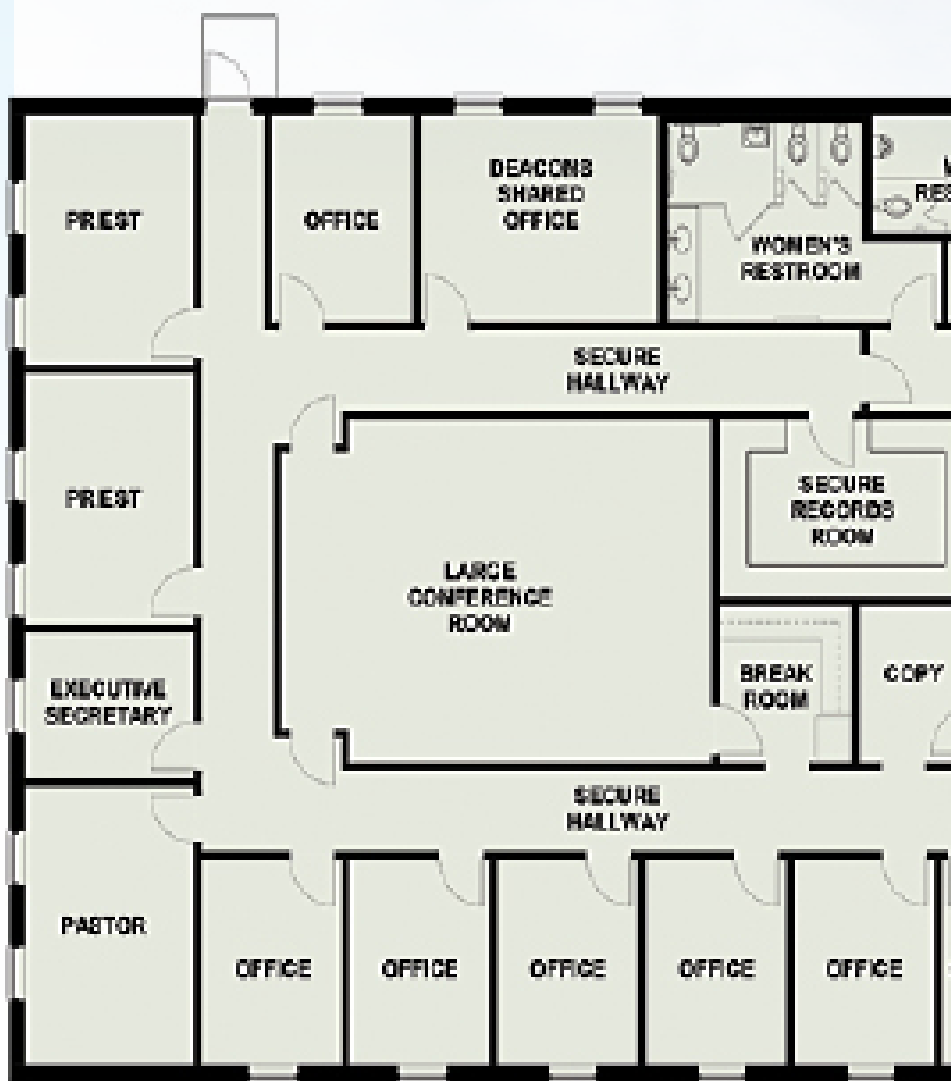
\$1,260,000	Construction of Parish Office Complex
\$ 330,000	Pre-Construction Fees, Building Systems, and Other Associated Costs
\$ 208,000	Additional Parking and Storm Drainage
\$ 96,000	Professional/Design Fees and Expenses
\$ 76,000	Contingency

## \$1.97 Million ~ Total Challenge Goal

*These costs are preliminary estimates and are based on 2018 pricing.*

### Faithful to our Mission Campaign Prayer

Loving God,  
at this time in the life of our Parish,  
we turn to you with grateful hearts  
for what we have,  
and with great anticipation  
for what is yet to be,  
Bless us with a sense of unity,  
a spirit of cooperation,  
and a generous sacrificial heart  
as we face the responsibilities  
and challenges of this Capital Campaign.  
We know there is much to do.  
We believe our goals are rooted in Your Word  
and in Your Work.  
Please guide us, strengthen us, and bless us  
with Your Presence,  
now and through the years to come.  
In Jesus' Name we pray.  
~Amen



*Above rendering  
Estimated size: 7,000 sq ft.*